

# Snooker Coaching With Nic Barrow:

## How To Reach The Snooker Coaching Room In Milton Keynes.

The address and contact details to the snooker coaching room are:  
Milton Keynes Snooker Club, The Square, Wolverton, MK12 5DG.

Google Map link: <https://goo.gl/maps/cAVWEPMdGN8xVcaGA>

DO NOT travel to The Snooker Gym registered office (my home) at 7 Woodall Close.

This registered / home address often shows up on internet searches...

but DOES NOT have a snooker table...

and I WILL NOT be there at our appointed time!

If you are lost on the day you travel, please call my personal mobile on:

From UK: 07920888788

From non UK numbers: +447920888788

Email: [nic147@thesnookergym.com](mailto:nic147@thesnookergym.com)

Please DO NOT use this number for general customer service issues as they will not get answered on this phone, and there is no messaging service on it. Instead please contact us here: <https://www.thesnookergym.com/contact-us>

## **Directions To The Club Appear On The Following Pages.**

- Please contact me before our session if you need any help with these directions.
- If you get to the club before the start of our session, simply go upstairs into the club bar area as they will know I have a guest that day and can show you into the training room.

## **Room Privacy.**

- The private match room itself is at the back of the club and is totally undisturbed.
- There are no windows from inside the club looking into the match room either, so no one is able to watch your coaching session.
- You are welcome to bring any guest that you like, and I am happy for them to stay in the room during our session if they want to. There is no cost for this from me or the club.

## **Food & Drink.**

- It is ok to eat any type of food in the room even if it has not been purchased in the club, so you can bring your own sandwiches and a drink if you like.
- There is also a small eating area in the room where we can snack between sessions.
- Alternatively, there is a choice of stores and food outlets with long opening hours in and around The Square for you to choose from.
- There are also Tesco and Asda hyper markets within a five minute walk from the club.



## Directions:

### By Planes:

- If you are coming from abroad, Luton Airport is closest with a 40 minute coach journey.
- London Heathrow is an 80 minute coach journey. London Gatwick is 100 minutes by coach.
- East Midlands Airport takes 60 minutes by coach. Manchester Airport takes 3 hours by coach.
- I can book the coach tickets for you and get them sent to you by email or sms message.
- National Express (<http://www.nationalexpress.com/coach/index.cfm>) run the best services, and if booking yourself you need to be sure to arrive at 'Milton Keynes Coachway'.
- I can then help you arrange the 20 minute taxi ride to the hotel after you get off the bus.

### By Trains:

- From London or other main routes, get off at Milton Keynes Central (NOT Bletchley).
- Black cabs are waiting outside the train station and will cost about £8 for the 4 mile journey to the club.
- From London's Euston Station, Milton Keynes Central is 40 minutes – it is usually worth purchasing the return ticket that allows you to get onto Virgin Trains as well as Midland Trains on that line. This costs only a few pounds extra and means you will always have a train every fifteen minutes or so for both parts of your journey.
- I may also be able to pick you up from the station on the way to the club.
  - In this case, simply let me know when the train will arrive or text me 15 minutes before arrival to Milton Keynes Central and I will come to pick you up.
- I can sometimes drop you back to the station after our session has finished.
  - If I cannot, we can organise a taxi for you to get back to the station.
- Alternatively, Wolverton train station is on a more local rail network and within walking distance of the club – and shown on the map below.

However, there are less routes that stop in Wolverton (and if they do usually take longer as they stop at every small station along the way), so it is usually easier to stop at Milton Keynes Central.

### By Automobiles:

- Milton Keynes Snooker Club is 10 miles off Junction 14 of the M1 motorway.
- If you are travelling South down toward Milton Keynes, then use Junction 15 of the M1.
- Alternatively the club can be reached within 2 miles of the Wolverton exit off the A5.
- If you want more a specific list directions you can go to <http://maps.google.co.uk/> and simply enter: **Milton Keynes Snooker Club, MK12 5DG**
- Or directly reach the Google Maps link is here: <https://goo.gl/maps/cAVWEPMdGN8xVcaGA>



## Directions By Map...

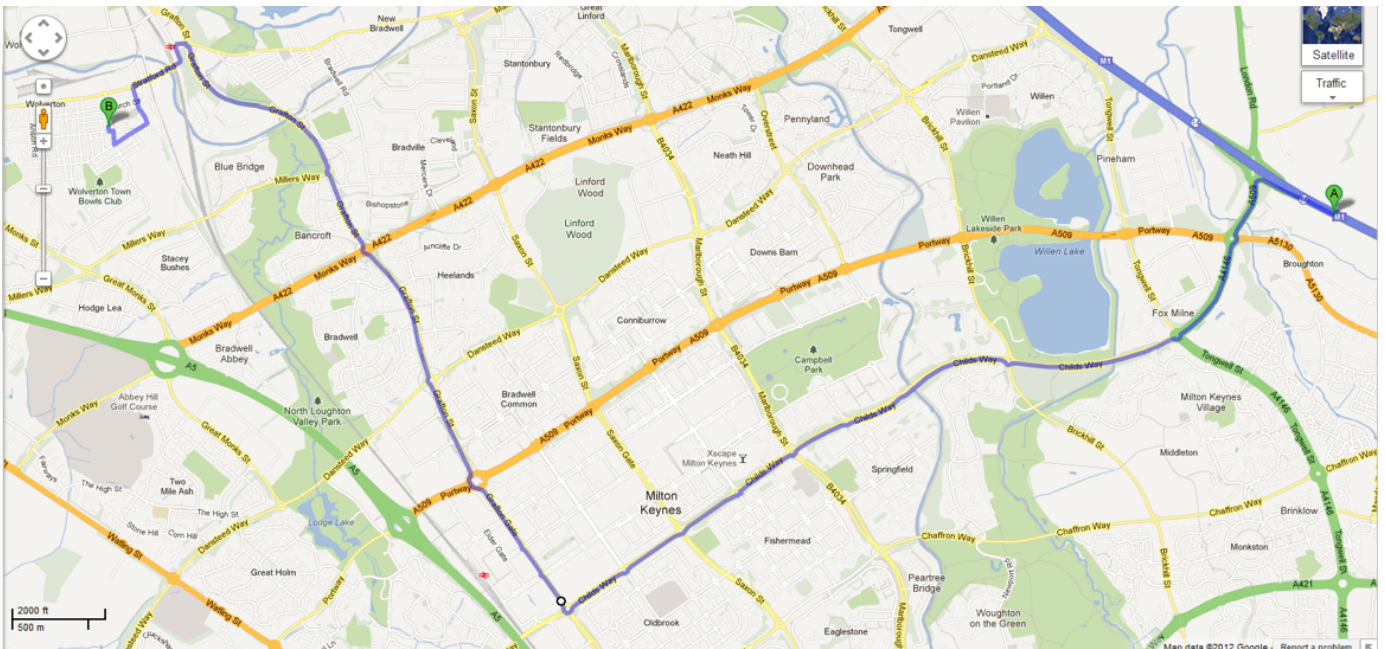
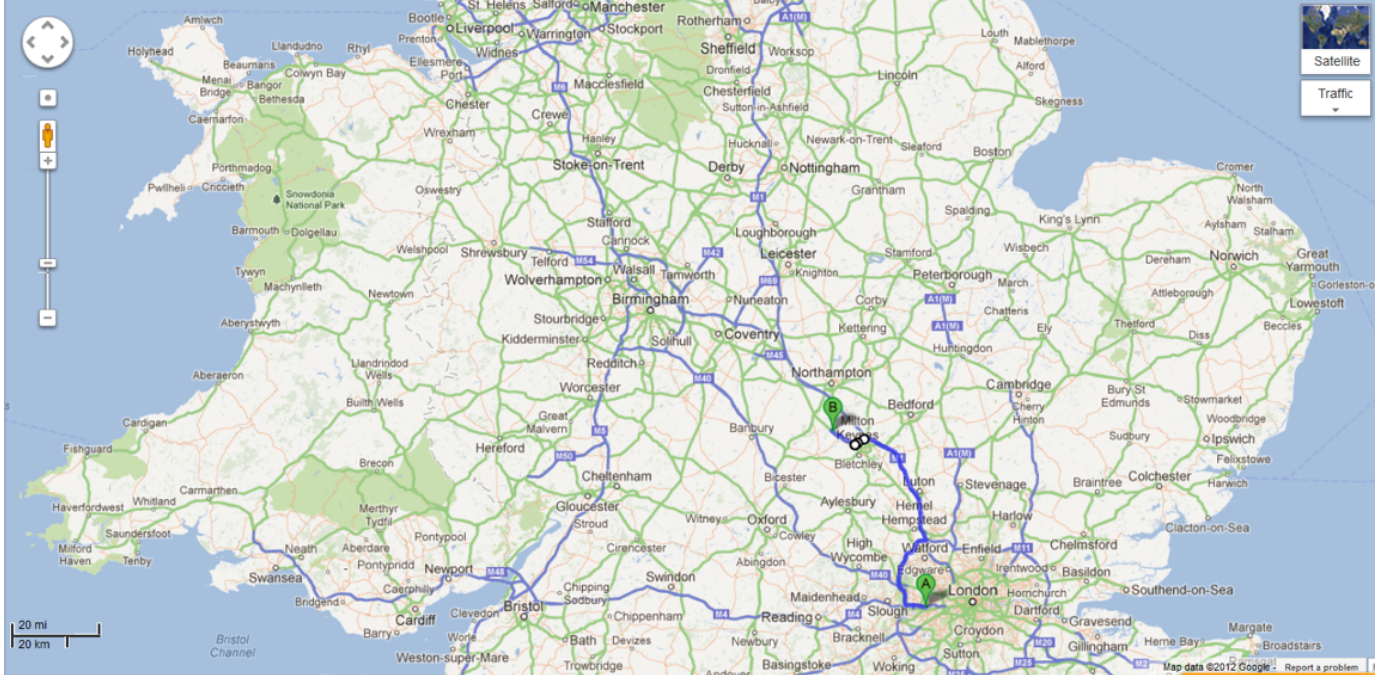
Google Map link: <https://goo.gl/maps/cAVWEPMdGN8xVcaGA>

Otherwise, screenshots of directions appear below:

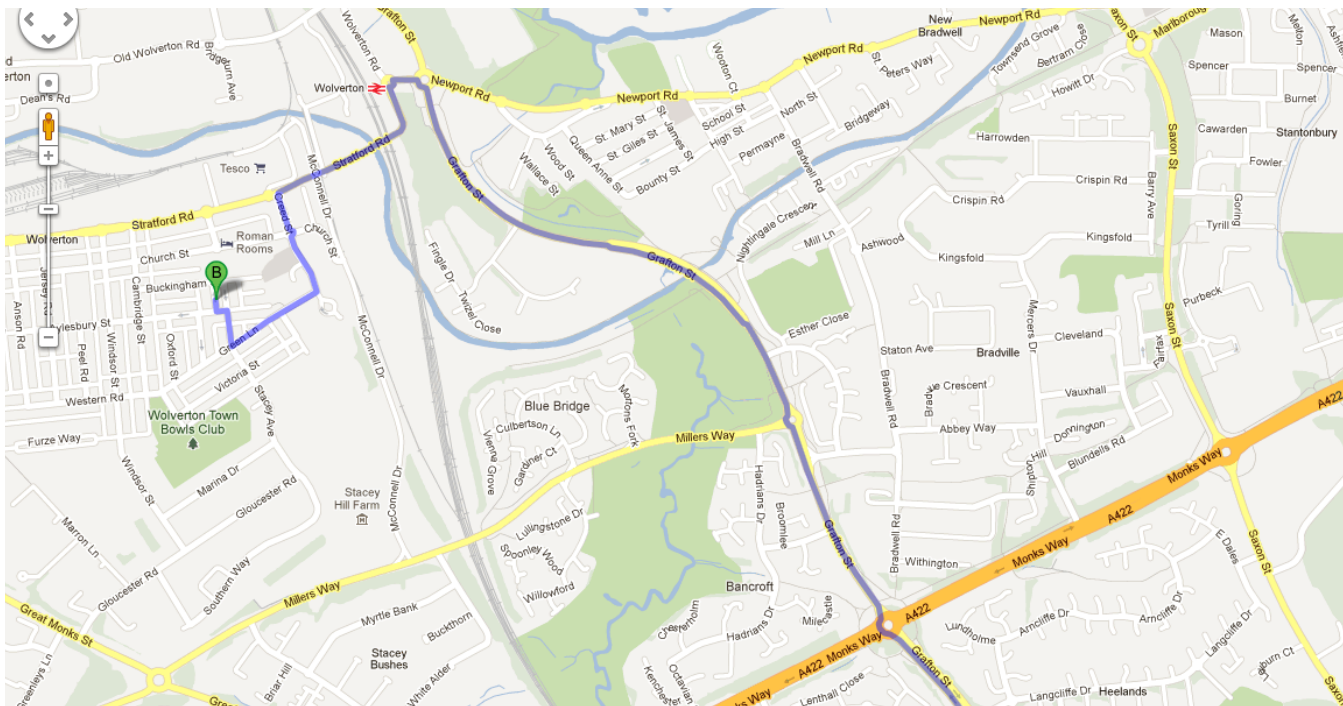
**M1 motorway about 40kms north of London, take Junction 14.**

**If travelling South down toward Milton Keynes, take Junction 15.**

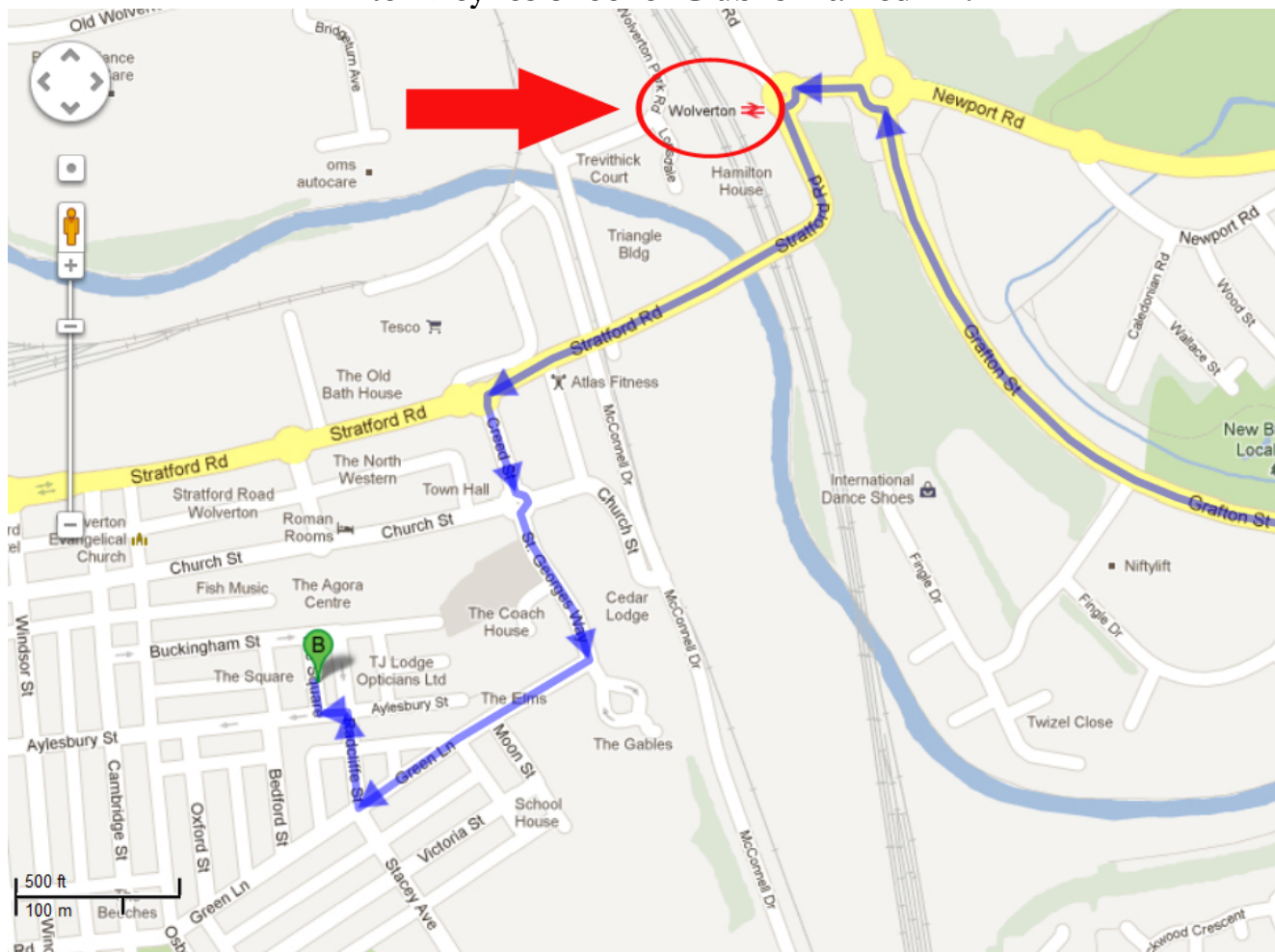
Alternatively, take the Wolverton turn off from the A5.







**Wolverton train station is marked in red.  
Milton Keynes Snooker Club is marked 'B'.**





## Entering The Square from Radcliffe Street...

As you approach The Square from Radcliffe Street by car,  
you will see the club over to the left hand side next to Premier convenience store and Lloyds TSB.  
There is dedicated parking directly behind the club.



## Parking in The Square, Wolverton:

The easiest way to park is in The Square at any time.  
I have been parking here for years without a parking ticket  
despite the signed parking restrictions.

If you park here and get a ticket,  
I will cover the cost myself for you.

I have also given the actual rules below:

- On Sundays, parking in The Square is free.
- At all times, the four parking places at the North & South ends of the Square are free.
- In the other parts of The Square, on Saturdays or during the week there is a one hour waiting restriction, so you will need to park behind the club which is just off The Square.



Two parking places are free at any time  
at the North end of The Square...



Two parking places are free at any time  
at the South end of The Square...





## How to access Milton Keynes Snooker Club car park:

- The parking behind the club is **free** at all times.
- This club parking is shared by Ebony Designs, Milton Keynes Snooker Club, And Domino's Pizza
- There is no clamping in operation in the club parking area – despite the outdated clamping sign!
- As you enter The Square from Radcliffe Street, turn left into Aylesbury Street and continue to the left past Domino's Pizza (see below).
- Ten metres after Domino's Pizza, turn right into the side street and on into the Milton Keynes Snooker / Domino's Pizza car park.

**Turn left onto Aylesbury Street and keep left past Domino's Pizza  
(which you can see below on the right hand side)**



**Ten metres past Domino's enter the alley. Then park anywhere on the right hand side...**



# Accommodation:

## These are the most popular hotels for my students:

- They are very comfortable and have great restaurants...
- It is easy to get a taxi to and from the club from each of these, and on most occasions I can help to pick you up and drop you off.
- These hotels are usually £50-100 per night depending on time of year.

This hotel is 20 mins walk from our house and it on a very nice lake. It has a restaurant, although that may be slightly noisy for sit down meals with others.

<https://www.premierinn.com/gb/en/hotels/england/buckinghamshire/milton-keynes/milton-keynes-willen-lake.html>

Easyhotel in the centre of Milton Keynes is the ultimate in no frills, low price, but clean hotels with prices ranging from £20 per night.

<https://www.easyhotel.com/hotels/united-kingdom/milton-keynes/milton-keynes-central>

If you prefer Air B&B, they can be found for around half that amount and we can help you find one in an area near Novotel where I could pick you up more easily.

<https://www.airbnb.co.uk/>

# Mercure Abbeyfield is 3 miles from the club.

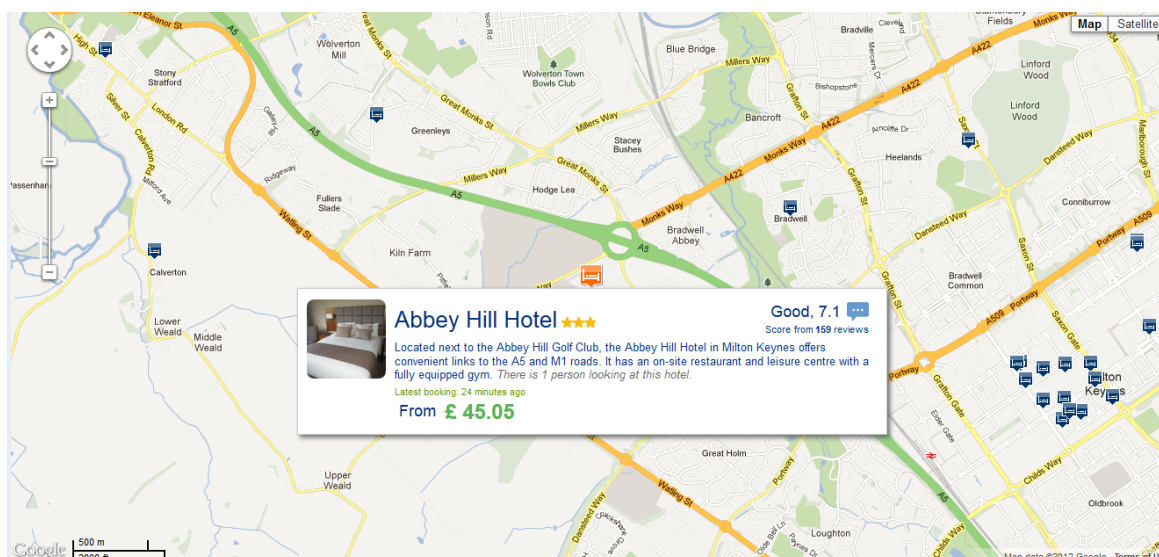
It is situation next to Abbey Hill Golf Course:

It offers 3 star accomodation at around £50-75 per night plus breakfast.

I cannot book this hotel for you, so you would need to book it direct.

<https://www.accorhotels.com/gb/hotel-8876-mercure-milton-keynes-hotel/index.shtml>

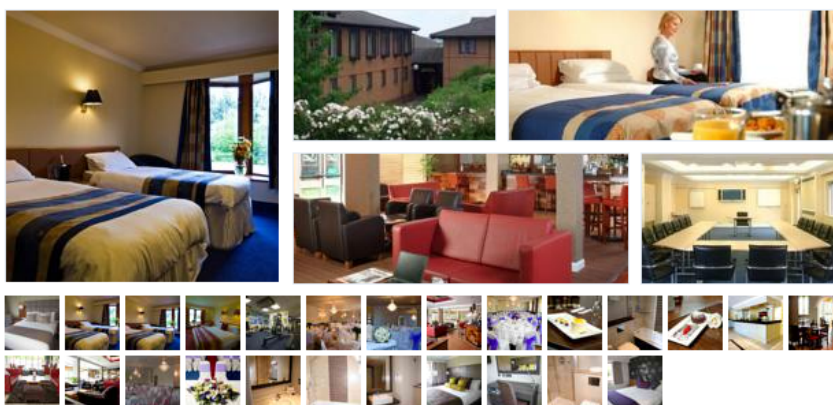
Abbey Hill Hotel, Monks Way, Two Mile Ash, Milton Keynes MK8 8LY  
Telephone: +44 (0)1908 561 666



## Abbey Hill Hotel ★★★

Two Mile Ash, Milton Keynes, MK8 8LY ([Show map](#))

[See all reviews](#)



Good, 7.1

Score from 159 reviews

*"since being taken over hotel is a lot better run, staff seem better trained enjoyed our stay, mr. asif the manager was very welcoming to us. will stay again as family live nearby."*

John, Skelmersdale

Located next to the Abbey Hill Golf Club, the Abbey Hill Hotel in Milton Keynes offers convenient links to the A5 and M1 roads. It has an on-site restaurant and leisure centre with a fully equipped gym.

Offering free unlimited Wi-Fi access, all rooms at the Abbey Hill come with air conditioning and satellite TV. The contemporary bathroom has a power shower and there is a 24-hour room service to complete your stay.

The hotel's snack menu offers a range of light dishes from every continent. Classic and contemporary dishes can be enjoyed at the Abbey Hill Brasserie, which uses locally sourced produce from sustainable suppliers.

Abbey Hill Hotel is a short trip from the city centre and 2 miles from Milton Keynes Central Train Station, with direct links to London in around 35 minutes by high speed train.



## Novotel Milton Keynes is 3 miles from the club.

It offers great 3 star accommodation at around £65 per night plus breakfast.  
sauna and steam · leisure facilities · indoor heated pool · shower and bath · elements restaurant

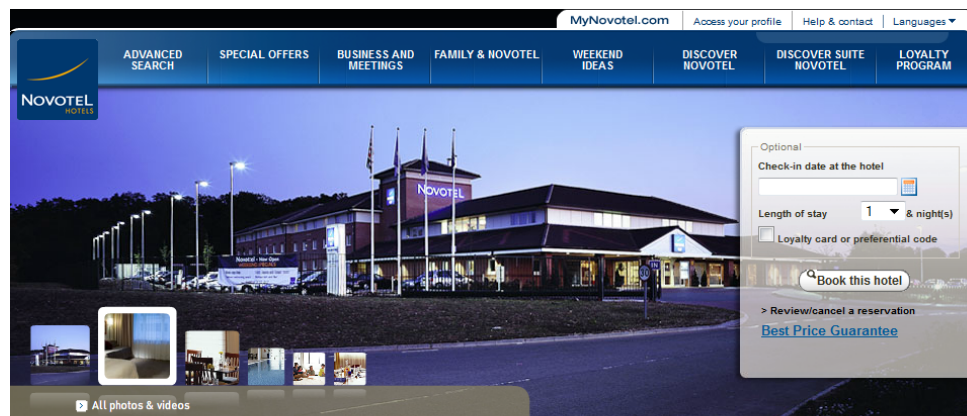
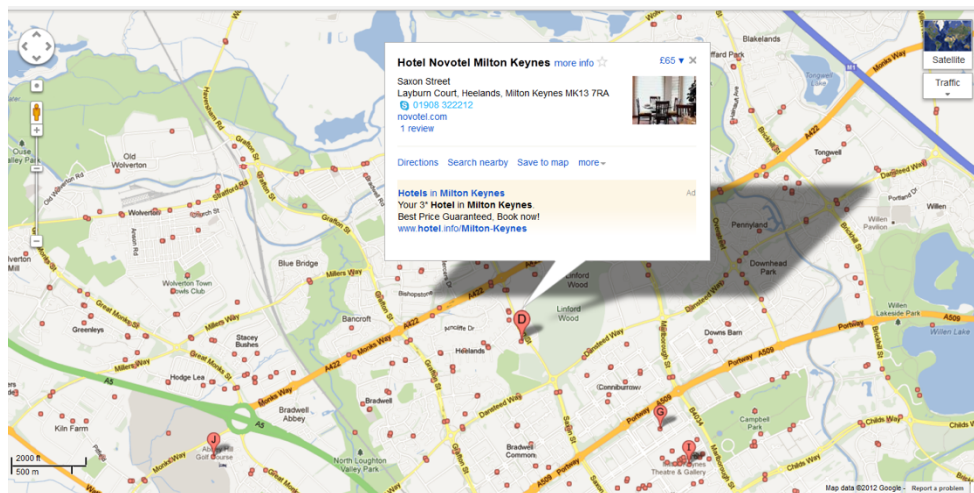
I cannot book this hotel for you, so you would need to book it direct.

If booking this hotel, insist on a room that is the **OTHER** side of the hotel to the swimming pool... because one client told me there was a deep bass motor going on near his room by the pool one night.

Saxon Street, Layburn Court, Heelands, Milton Keynes MK13 7RA

Tel: +44 (0)1908 322 212

<https://www.accorhotels.com/gb/hotel-3272-novotel-milton-keynes/index.shtml>



### Hotel Novotel Milton Keynes

**Your hotel**

- Rooms
- Bar & restaurant
- Services and leisure
- With the family
- Meetings
- Near the hotel
- Location & access
- All photos & videos

**Practical information**

124 7

This 3 star hotel in Milton Keynes is a couple of minutes from the town center. The Novotel Milton Keynes has 124 modern guest rooms, each with wireless Internet access and flatscreen TV. Sample contemporary cuisine at Elements Restaurant, or the varied drinks menu at the bar. The hotel has its own fitness center and a relaxing indoor heated pool. Meetings and weddings can be held in one of the 6 function rooms for up to 120 people, and there is also free parking on-site.

**Hotel highlights**

The hotel is a couple of minutes from central Milton Keynes, and the Silverstone race track is a 25 minute drive from the hotel. There is good access to the M1, and Milton Keynes Central train station is 4 km away.

**RATES & RESERVATION**

Saxon Street  
Layburn Court, Heelands  
Milton Keynes  
MK13 7RA MILTON KEYNES  
UNITED KINGDOM  
Tel (+44)1908/932800  
Fax (+44)1908/322235  
E-mail H3272@accor.com  
Hotel Manager :  
Mr. Sylvain LAGIER  
**Location & access**  
GPS: N 52° 3' 10.95" W 0° 46' 13.24"

**CITY BREAKS** up to 40% off your room

**EARLY BREAKS** Book early and save

**Recently viewed hotels**

- Novotel Milton Keynes

**Novotel and you**

# **Amenities In & Around Milton Keynes:**

‘Wives And Girlfriends’ of players can enjoy the tremendous shopping and tourism facilities in and around Milton Keynes.

## **Milton Keynes Tourism.**

<http://www.destinationmiltonkeynes.co.uk/>

You'll never be short of something to do in Milton Keynes. Offering some of the most exciting activities and some of the best entertainment experiences in the UK, Milton Keynes is a truly exceptional destination to visit.

**Shopping** - Milton Keynes started the modern concept of the European shopping experience. In the city centre you'll find all-encompassing shopping malls with over 400 shops and throughout the surrounding areas you can discover boutique village shops and farmer's markets. The biggest shopping centre is 1km long, and is anchored by John Lewis and Debenhams: <http://www.thecentremk.com/Visitor-Information/Getting-Here>

**Sport & Activities** - From indoor skiing on real snow to water sports, indoor sky-diving, an army style assault course, and a state-of-the-art football stadium, Milton Keynes is definitely sport mad. Home to the national centre for badminton and close to the Silverstone racing circuit and Towcester racecourse... you can experience loads of sports and activities in Milton Keynes!

<http://www.xscape.co.uk/milton-keynes>

<http://www.silverstone.co.uk/>

<http://www.towcester-racecourse.co.uk/>

**Leisure** - Are you crazy about theme parks? Do you want to walk with dinosaurs? Would you like to relax in 4,500 acres of parks and woodland, or attempt water sports on one of the cities' beautiful lakes? Milton Keynes is the city in the country, a purpose built environment where trees count for as much as concrete. Our green spaces are home to tree top walks and exciting theme parks. Walk under our trees, through their canopies, or enjoy the rides in their midst.

<http://www.willenlake.org.uk/>

**Culture, History & More** – Award winning galleries and theatres, stately homes, medieval abbey ruins and traditional village pubs, Milton Keynes is a cultural and historical oasis. And with the fastest-growing ‘after 6pm’ culture outside London, you'll find every type of food, drink and entertainment experience you could want.

<http://www.thehub-miltonkeynes.com/>

# Reaching Central London (36 mins by train from MK Central station to London Euston station).

## Shopping & Tourist Attractions:

For your own interest, or to perhaps to visit with your partner on one day or evening during your visit, you can visit London – the following being some of the most popular attractions:

- The London Eye
- Buckingham Palace
- Harrods, Oxford Street, and other unlimited shopping experiences.

Milton Keynes Central Station is 36 minutes on the train to Euston Station in the centre of London, from where you can easily take the Tube to the above attractions and more.

Here are some maps for Tube travel within London.

<http://www.tfl.gov.uk/maps/track>

<http://journeyplanner.tfl.gov.uk/im/si-t.html>

Alternatively, you can download the London Tube app for your iPhone or Android device.

END.